

Technology for Innovators

Custom made motion solutions for mobile applications



Hydreco Hydraulics Press Kit 2022



Booth C28 - Hall 18



[hydreco.com](https://www.hydreco.com)

**HYDRECO HYDRAULICS - NOW PART OF DAIKIN - EXHIBITS AT THE
EIMA SHOW IN BOLOGNA, ITALY**

The Diplomatic Group company, now part of Daikin Industries, specialized in the design and production of motion control solutions for mobile operating machines, will present its new products at the Eima show, which will take place at the Bologna exhibition center, from 9 to November 13, 2022 (stand C28, hall 18).

Vignola (Modena, Italy), November 3rd, 2022 At the Eima show for agricultural machinery, Hydreco Hydraulics - since last July 1st part of the Japanese group Daikin - will be exhibiting in hall 18, stand C28, where it will show its integrated solutions for motion control.

The new Hydreco Hydraulics exhibits at EIMA are:

- MS series 6-way, center bypass open center directional control valves, designed in a wide range of configurations and options to meet all customer needs
- the new ergonomic multifunction handle MHC whose robust design in polyamide PA6, enriched with glass fiber, is suitable for harsh environments and for all applications where long life and reliable components are required. Its ergonomic shape, tilted fifteen ° forward, has been designed to adapt to the operator's hands.

The stand will also highlight motion control solutions, which include joysticks and hydraulic pedipulators, power units, joysticks, and electric / electronic pedals, alongside machine control systems based on the #CANbus protocol, bankable valves, and hydraulic cylinders, which complete the product portfolio.

Also on display are the most recent developments in external gear pumps, made in the new production site in Parma, and the new series of cartridge valves.

At Eima, on November 9th, from 2.30 pm to 3.15 pm, a Press Talk will be held on the Hydreco stand to present the synergies with the Daikin group to the press. *"Hydreco is now part of Daikin Industries. This significant step in the group's growth history is an extraordinary opportunity to integrate the strengths and skills of Diplomatic, Continental, Hydreco and Till"*, said Katie McColl, CEO di Hydreco Hydraulics e di Continental Hydraulics.

Hydreco Hydraulics, based in Poole, UK, was acquired in 2019 by the Diplomatic MS Group, of Parabiago (Milan, Italy). The Group has a turnover of 147 million euros and over 650 employees. Hydreco Hydraulics has a long and significant heritage in the world of hydraulic components: for over a hundred years it has been designing, manufacturing, and distributing products for the transport and mobile hydraulics sector: with offices and plants in Italy, Norway, Germany, USA, India, and Australia, Hydreco has a worldwide production and sales network. www.hydreco.com **Press info:** Sara Bernardelli, s.bernardelli@diplomatic.com

PRESS RELEASE 7/2022

**HYDRECO HYDRAULICS – ORA PARTE DI DAIKIN – ESPONE ALLA FIERA
EIMA DI BOLOGNA**

L'azienda del Gruppo Duplomatic, ora parte di Daikin Industries, specializzata nella progettazione e produzione di soluzioni per il controllo del movimento per macchine operatrici mobili, presenterà le novità alla fiera Eima, che si svolgerà presso il quartiere fieristico di Bologna, dal 9 al 13 novembre 2022 (stand C28, pad. 18).

Vignola (MO), 3 novembre 2022 – Alla fiera Eima di Bologna per le macchine agricole, Hydreco Hydraulics - dal 1° luglio scorso parte del gruppo giapponese Daikin - sarà presente come espositore nel **padiglione 18, stand C28**, dove mostrerà le proprie soluzioni integrate per il controllo di movimento.

Le novità Hydreco Hydraulics in esposizione a EIMA sono:

- la serie MS di valvole di controllo direzionali a centro aperto a bypass centrale, a sei vie, progettate in un'ampia gamma di configurazioni e opzioni per soddisfare tutte le esigenze dei clienti
- l'impugnatura ergonomica multifunzione MHC (*Multifunction Handle Control*) il cui design robusto in poliammide PA6, arricchito con fibra di vetro, è adatto per ambienti gravosi e per tutte le applicazioni dove sono necessari lunga durata e componenti affidabili. La sua forma ergonomica, inclinata di 15° in avanti, è stata progettata per adattarsi alle mani dell'operatore.

Allo stand saranno, inoltre, presentate le soluzioni per il controllo di movimento, che includono joystick e pedipolatori oleodinamici, unità di alimentazione, joystick e pedali elettrici/elettronici, accanto ai sistemi di controllo macchina basati sul protocollo [#CANbus](#), alle valvole bancabili e ai cilindri oleodinamici, che ne completano l'offerta.

In mostra anche i più recenti sviluppi delle pompe a ingranaggi esterni, realizzate nel nuovo sito produttivo di Parma e la nuova serie di valvole a cartuccia.

A Eima, il prossimo 9 novembre, dalle 14:30 alle 15:15, è previsto uno specifico evento allo stand Hydreco per presentare alla stampa le sinergie con il gruppo Daikin. *"Hydreco è ora parte di Daikin Industries. Questo passaggio significativo nella storia di crescita del gruppo rappresenta una straordinaria opportunità di integrazione dei punti di forza e delle competenze di Duplomatic, Continental, Hydreco e Till"* ha affermato Katie McColl, CEO di Hydreco Hydraulics e di Continental Hydraulics.

Hydreco Hydraulics - con sede a Poole, in Gran Bretagna, è una realtà acquisita nel 2019 dal Gruppo Duplomatic MS di Parabiago (MI) - ora Daikin - che ha un giro d'affari di 147 milioni di euro e oltre 650 dipendenti. Hydreco Hydraulics ha una lunga e significativa tradizione nella componentistica oleodinamica: da oltre cento anni progetta, produce e distribuisce prodotti per il settore dei trasporti e dell'oleodinamica per il settore mobile: con sedi in Italia, Norvegia, Germania, USA, India e Australia, Hydreco dispone di una rete mondiale di produzione e vendita. www.hydreco.com Press info: Sara Bernardelli, s.bernardelli@duplomatic.com

Hydreco MHC Handle

MHC (Multifunction Handle Control) is the most recent outcome of the Hydreco range. Its strong and robust design in Polyamide PA6 enriched with glass fiber makes it suitable for harsh and heavy duty environment and for all that applications where long life and reliable components are needed. Its ergonomic shape, tilted 15° forward, has been designed to fit operators hands, making their job more comfortable due to its smart grip along the handle length.

It can be customized mounting the all the controls belonging to the Hydreco range, such as rocker switch, HYRP proportional roller, mini-joystick, switches and so on.

It can be left hand or right hand, with tilting options to improve the ergonomic feeling of operators; also, it can be equipped with a capacitive sensor to detect the presence of the operator and with the new reliable electronic architecture that make it suitable for standalone CAN bus application.



MHC Handle



Press info: Sara Bernardelli,
s.bernardelli@duplomatic.com

Hydreco MS Series

MS series are central bypass, 6-way, open-center directional control valves for mobile application. The range is designed to provide uncompromising performance with a wide range of configurations and options to meet all the customers' needs.

TECHNICAL FEATURES - MS90/120

- Compact and Modular construction: a single pump can supply from 1 to 12 services.
- Max Pressure: 350 bar.
- Max Flow Rate: 60 l/min (MS 60), 90 l/min (MS 90) and 120 l/min (MS 120).
- Spools: (single/double-acting, working ports locked or open in neutral, 4th floating pos.)
- Spool controls: electrohydraulic proportional, hydraulic proportional, lever controls



COMING SOON:

MS 60

MS Series



Press info: Sara Bernardelli,
s.bernardelli@duplomatic.com

Hydreco Hydraulics

Hydreco HY Gear Pumps and Motors

The HY new range of gear pumps and motors is the result of the experience and knowledge acquired over many years of engineering and manufacturing that made Hydreco very well known for the performance and the reliability of its gear pumps series.

The HY series is provided with an aluminium alloy housing, two gear wheels supported by sleeve bearings and cast iron flange and cover. Available as pumps and motors, the series offers high efficiency and can be applied in standard and heavy duty application, thanks to the high reliability and the accuracy of the design and production.

The pumps can be supplied as single, or as multiple units with a huge variety of options on flanges, shafts and ports, providing the right setup on each application. Feel free to contact Hydreco representative to find out more and get the proper support in your selection.

DISPLACEMENT (HY1+HY3)

From 1 to 63 cm³/rev [from 0.06 to 3.84 in³/rev]

PRESSURE

Max continuous 260 bar (3770 psi)

Max intermittent 290 bar (4200 psi)

Max peak 310 bar (4500 psi)

MAX SPEED

4000 rpm

HY Gear Pumps and Motors



ALREADY AVAILABLE:

Group 1 and group 2 pumps and motors in multiple configuration

Group 2 low noise version

Group 2 with cast iron body

Group 3



COMING SOON:

Group 3 with cast iron body

Press info: Sara Bernardelli,
s.bernardelli@diplomatic.com

Hydreco KCB Valves

They control the movement of a hydraulic actuator (cylinder or motor), specifically:

- Safe locking of actuator with directional valve in idle position (or with pump stopped).
- Controlled movements of the actuator when the load is descending. Due to the presence of the pilot line, the velocity of the actuator is always due to the flow rate from the pump, even in the case of dragging load, cavitation phenomena that can cause serious accidents due to loss of control are avoided.
- They limit the maximum pressure in the service due to any shocks, overloads or abrupt maneuvers.
- They allow free rise of the load thanks to a built-in one-way valve.



KCB Valves



Press info: Sara Bernardelli,
s.bernardelli@duplomatic.com

Hydreco Mini EPVJ Joystick

Hydreco is pleased to introduce a new range of EPVJ Mini Joystick.

Among the wide variety of electrical controls for all kinds of mobile applications, the new-born EPVJ Joystick made in Italy features a new technology based on reliable REED magnetic switch (neodymium magnet) and four ON-OFF functions as standard.

Mini-EPVJ version is available to fit smaller space for armrest and console mounting, preserving strong mechanical structure and high reliability.

This is a solution for heavy duty applications in agriculture (small tractors for vineyards, orchards, and fruit/vegetable pick up) and forestry (firewood processors).

Electric and magnetic technology for a longer life and perfect operation in outdoor conditions.

**Mini EPVJ
Joystick**



Press info: Sara Bernardelli,
s.bernardelli@duplomatic.com

Hydreco MDC Joystick

The MDC Joystick is an electro-proportional solution for the most sophisticated needs in multiple sectors: agriculture (telehandlers, tractors, special vehicles/attachments, ...), construction (mobile cranes, special excavators), forestry (timber cranes), material handling (loaders, reach stackers, fork lift trucks) and municipal (loaders and snow tracks).

This model of joystick provides machine manufacturers with a robust, hard wearing solution as it features a PA66 body with glass fibre and a strong mechanical structure for long operating life. It operates between -40 and +85 °C (-40÷185°F) and it features an IP65 protection.

The MDC joystick is available also on single axis execution and it can be configured as crossed version (combined movements inhibited).

Its electronics is based on SMD Hall effect technology, a well proven and very reliable solution.

The joystick layout provides long life operation, with an extremely robust design of the mechanical components, as well as an accurate development of the electronics. Voltage supply is between 9 and 32VDC.

It features closed-loop digital controlled outputs and the output versions include 0÷5V, PWM, CAN bus, Ratiometric. It is a user-friendly device, with the possibility of setting up the main parameters through a simple software interface provided by Hydreco.

**MDC
Joystick**



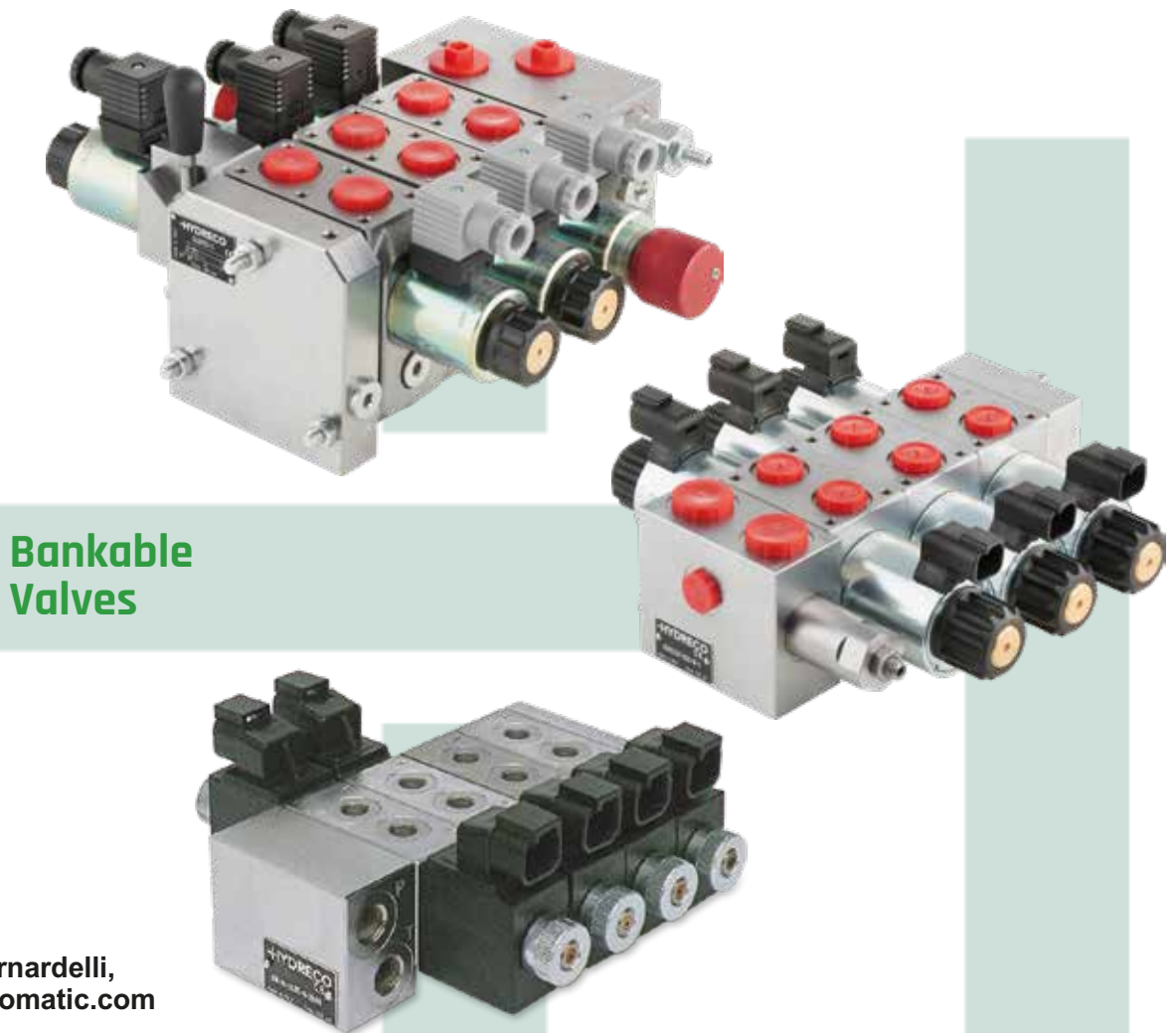
Press info: Sara Bernardelli,
s.bernardelli@duplomatic.com

Hydreco SD-SDN-SLSE Bankable Valves

Hydreco is pleased to introduce the range of bankable valves. The range represents the answer to the demand of a compact but effective solution on the bankable valves side of applications.

With a flow capacity from 15 l/min to 60 l/min and the possibility of assembling up to eight working sections - with a significant variety of options – the bankable valves are the right “device” for many applications, where flexibility and compactness are a must.

With the maximum operating pressure at 320 bar, the range of SDN, SD and SLSE bankable valves is at your side to implement the solution that empower your application.



**Bankable
Valves**

Press info: Sara Bernardelli,
s.bernardelli@duplomatic.com

Hydreco Hydraulics

Hydreco Remote Controls

Hydreco Hydraulics provides an extensive range of hydraulics remote controls. From the dual axis joystick (available in 2 versions to match all the needs of various applications) to the single axis device (usable also in the modular version with many options on board). The range includes also monoblock pilot valves, particularly suitable in the most demanding environment, foot pedals, available in various configurations and layouts, as well as supply units, configurable with 2 or 3 ways selector - 12/24VDC solenoid.

All devices can be supplied with more than 200 metering curves for the optimal regulation of the main controls (Directional Control Valves and/or Hydrostatic Transmission).

Hydreco is happy to support customer's request with tailor made solutions, based on our experience and the wide range of available solutions.



Press info: Sara Bernardelli,
s.bernardelli@duplomatic.com

Hydreco Hydraulics Cylinders

Our challenge is shaping our customers' projects, being flexible and effective in providing the right solution.

TECHNICAL FEATURES

- Bore up to 500mm and length up to 8000mm
- Working pressure up to 450 bar and testing up to 650 bar
- Special materials upon request
- Special treatments and finishing for harsh environments
- Internal transducer equipped
- On board control valves



Hydraulics Cylinders

Press info: Sara Bernardelli,
s.bernardelli@diplomatic.com

Hydreco Handles

Hydreco Hydraulics is able to supply several types of multifunction ergonomic handles.

The concept at the base of Hydreco proposal is the easy of operation for the customers, thanks to the attention to the design and the proper fit for the operator.

The 3 models (MFE, MFE2 and EXM) can host many different devices with multiple possibilities on the configurations side. Also, logic boards can be built in, providing additional power without compromising ergonomic and/or cabin space. Capacitive sensors are also available to provide an effort free experience and a significant advantage to the operators. Tailor made solution is the key feature of our handles range, completed by knobs and straight command for the simplest needs.



Press info: Sara Bernardelli,
s.bernardelli@diplomatic.com

Hydreco Hydraulics

Hydreco WSP Pumps

Hydreco new range of WSP cast iron gear pumps has been designed to deliver an incredible output pressure up to 350 bars. The WSP range can clearly respond to the most demanding application, wherever you are.

The WSP series is equipped with a cast iron body and flanges. Thanks to their high reliability and precision in design and manufacturing, these pumps guarantee a long-life expectancy

Available as both single and multiple pumps, these pumps provide a wide variety of options on flanges, shafts and ports, providing the right configuration for every application.

DISPLACEMENT (WSP40 + WSP50)

From 12 to 88 cm³/rev [from 0.73 to 5.37 in³/rev]

PRESSURE

Max continuous 350 bar (5075 psi)

Max peak 360 bar (5220 psi)

MAX SPEED

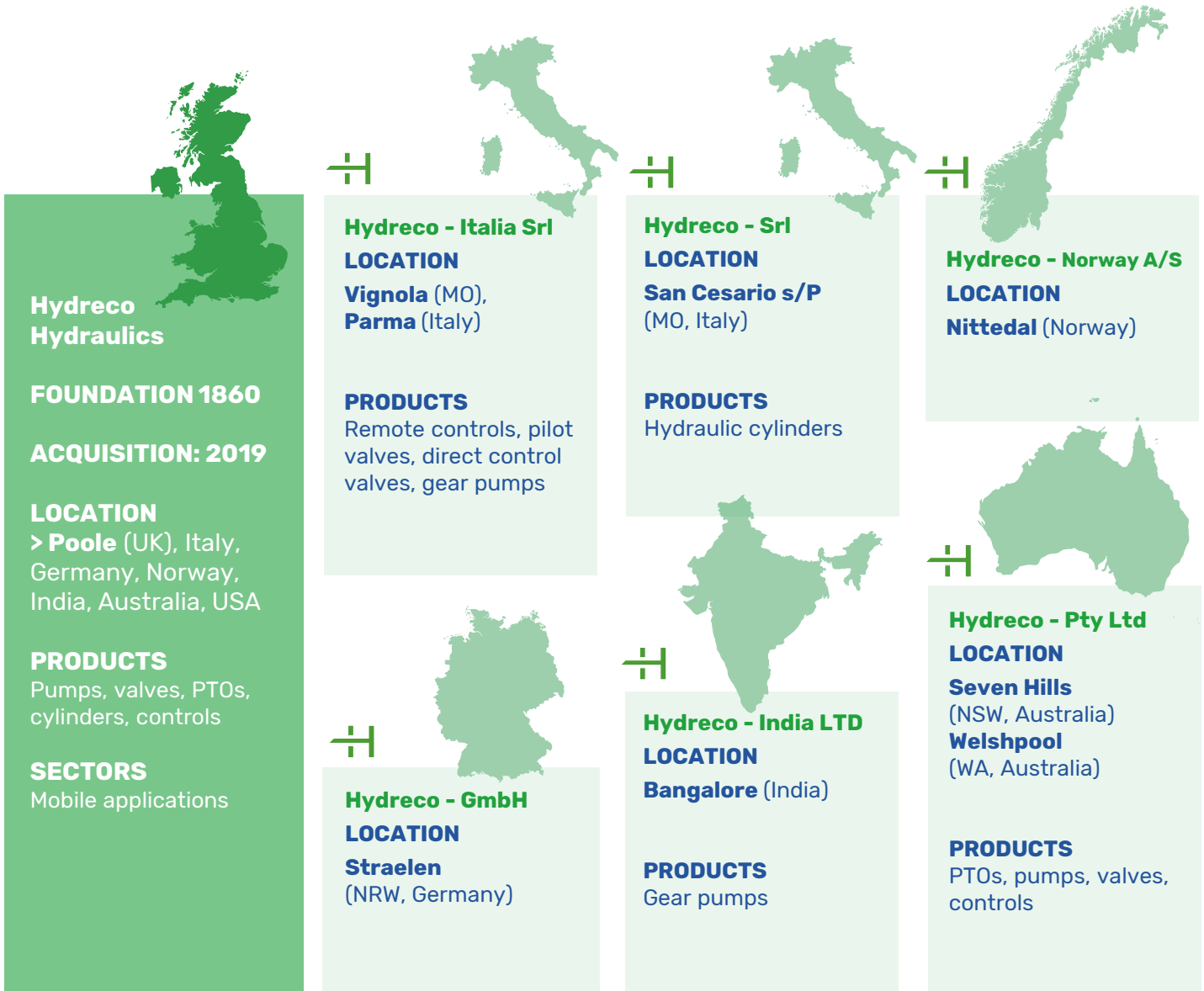
Up to 3500 rpm

WSP Pumps



Press info: Sara Bernardelli,
s.bernardelli@duplomatic.com

Hydreco Hydraulics



Press info: Sara Bernardelli,
s.bernardelli@diplomatic.com

Over 100 years of Hydraulics Experience

Hydreco Hydraulics - a member of Duplomatic Group, now part of Daikin Industries - is the designer, manufacturer and distributor of products servicing the transport and mobile hydraulics sector. Hydreco has a combined history of 100+ years in developing solutions through a rich heritage of legacy companies.

The joining of David Brown Hydraulics, Powauto and Hydreco in 1997 brought together some of the most respected products, people and heritage brands in the business. Engineering excellence is at the core of Hydreco's organization, the product range is geared towards offering the best possible solution for many applications within Construction, Earth Moving, Transport, Industrial, Materials handling, and many more.

Outstanding performance on a global scale

Hydreco's entry into Duplomatic Group in 2019 has resulted in a strong synergy between the two organizations, strengthening the Group's ability to provide tailored solutions for a wide range of applications in the mobile and industrial sectors.

Advanced Hydraulic Technologies

Hydreco Hydraulics has an extensive range of low noise helical gear, aluminium and cast iron gear pumps, as well as standard spur gear models. Its valve range covers the complete portfolio of Duplomatic Motion Solutions products, multi-spool sectional and monoblock models with electro-hydraulic, hydraulic and lever control and manifold system solutions.

Dual axis, stackable, and single axis hydraulic pilot valves are also available with an extensive range of handle options including ergonomic handles with many switches and button options. Hydreco is also capable to produce tailor made hydraulic cylinders, with an extensive range of bores, lengths and options.

The Group also provides a range of electronic devices for the complete control of mobile vehicles.



Press info: Sara Bernardelli,
s.bernardelli@duplomatic.com

HYDRECO

a member of **DAIKIN** group

DIPLOMATIC
MOTION SOLUTIONS

a member of **DAIKIN** group



CONTINENTAL
HYDRAULICS

a member of **DAIKIN** group



hydreco.com