

Technical Data Sheet



73148A HOSE BURST VALVES

Hose Burst Valves

The hose burst valve is an inline safety valve that prevents the tipper body lowering in the event of a hose rupture.

The ease of fitting makes it ideal for new applications and retro fitting to existing systems.

This safety device complies to the Australian Standard AS1418.8 Section 4.4.4 and is required to be installed in accordance to the Cranes, Hoists and Winches guidelines.

Suits:

Crane, Tipper and winch applications.

Product Features

- **Low Pressure Drop**
For fast lowering
- **Manual Override**
For maximum security.
- **Hardened Seats**
For long life and low leakage
- **Hard Anodised Air Cylinder With Stainless Steel Piston**
For long life and corrosion protection.

POW AUTO

DAVID BROWN
HYDRAULICS

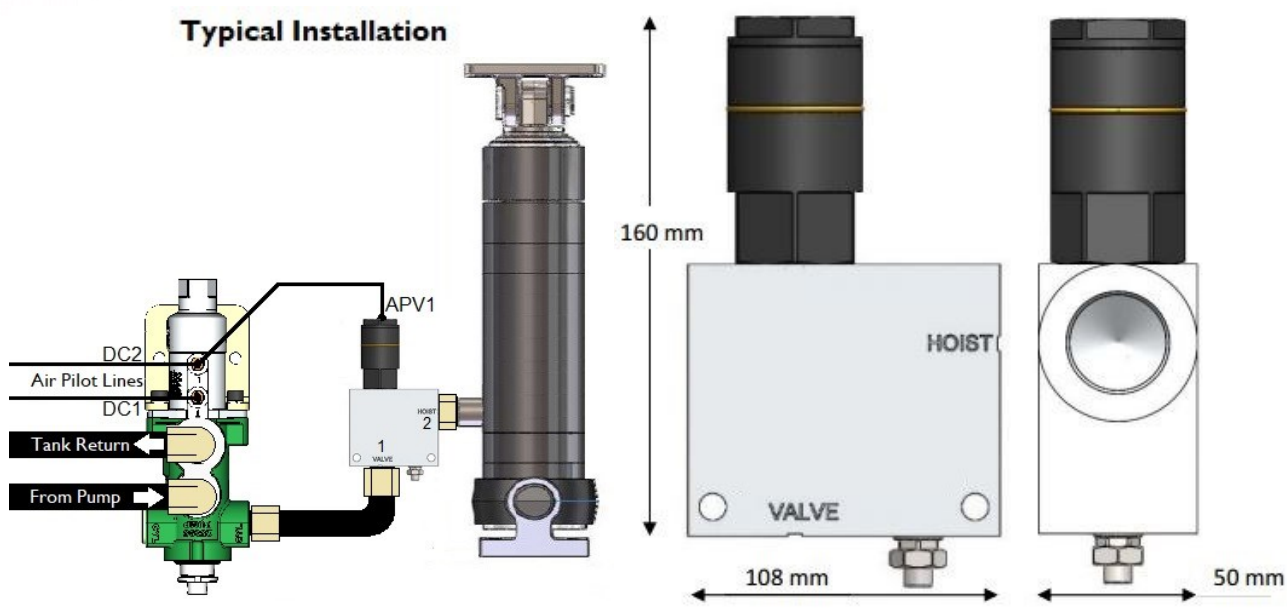
HYDRECO®

HYDRECO
POW AUTO
ADVANCED HYDRAULIC TECHNOLOGIES

www.hydreco.com

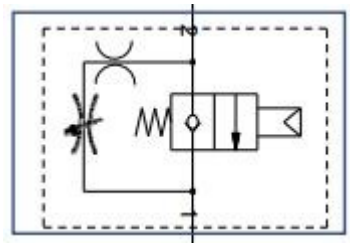
Technical Data Sheet

Typical Installation

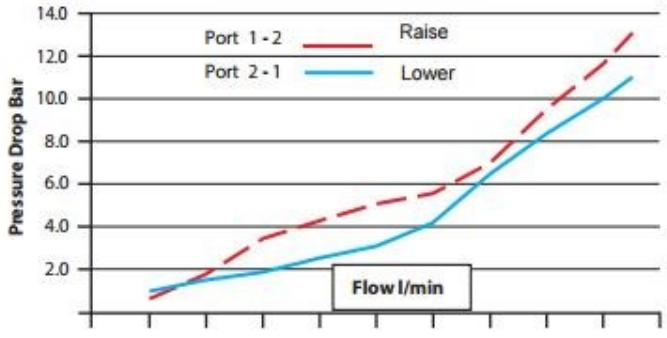


Air Pilot Operation

Function	DC1	DC2	APV1
Raise	Pressure	Vent	Vent
Hold	Vent	Vent	Vent
Lower	Vent	Pressure	Pressure



Flow Performance



Technical Specifications		73148A
Flow Rate	L/min	150
Max Working Pressure	Bar/psi	207 / 3000
Min Air Line Pressure 'P'	Bar/psi	2.1 / 30
Air Line Pressure 'P'	Bar/psi	5.5 / 80
Weight - Cartridge	kg	0.75
Weight - Body	kg	0.1
Filtration	ISO Code	16/13
Viscosity	cSt	10 to 400
Ports	BSPP	1"

Technical Notes

- Pneumatic operated 2 way normally closed valve:
- With air pressure on P - Free flow from 2 to 1 and 1 to 2.
 - Without air pressure on P - Flow is blocked from 2 to 1 and free from 1 to 2.
- Manual bypass
- Loosen bypass screw to bleed flow from 2 to 1.

Doc: HBV—05/18

