

# HYDRECO

ADVANCED HYDRAULIC TECHNOLOGIES



ENGINEERED TO MOVE

**1860**

DAVID BROWN  
ESTABLISHED



**1913**

HAMWORTHY  
ENGINEERING  
ESTABLISHED



**1928**

EG BISHOP  
ESTABLISHED

**1959**

POW AUTO  
FORMED

**POW AUTO**



**1993**

DAVID BROWN GROUP ACQUIRE  
HAMWORTHY HYDRAULICS  
TO FORM DAVID BROWN  
HYDRAULICS



**1997**

DAVID BROWN  
HYDRAULICS ACQUIRE  
POW AUTO AND HYDRECO



**1998**

TEXTRON ACQUIRE  
DAVID BROWN  
GROUP



**2008**

CLYDE BLOWERS  
ACQUIRE TEXTRON  
FLUID & POWER

**2013**

DAVID BROWN  
HYDRAULICS  
REBRANDED AS  
HYDRECO

**2019**

DIPLOMATIC  
ACQUIRE  
HYDRECO



# 100 YEARS OF HYDRAULICS EXPERIENCE



# OUTSTANDING PERFORMANCE ON A GLOBAL SCALE



We can demonstrate a proven ability to meet the needs of our customers and to support world leaders in their individual fields. It's not just about delivering a product; it starts with assessing each customer's needs, runs through correctly selecting or configuring the product, and continues for its extended life cycle.

Superior performance, outstanding quality, excellent service and expert advice. Those are the cornerstones of the global hydraulics capability represented by Hydreco and Powauto.

Our hydraulic gear pumps and motors, main control valves, pilot control valves and power take-offs provide the power and control behind the biggest names for equipment in construction, forestry, agriculture and mining through to specialised plant for materials handling, marine and municipal use, along with a wide range of industrial applications.

Practical performance, allied to knowledge of the user's application, and backed by superb technical skills and capabilities, ensures we have the strength to satisfy hydraulic demand on a global level.

## MINING

We have many years of experience in providing solutions for the underground mining industry.



## PILOT CONTROL VALVES

- Remote pilot operation of directional control valves with user-friendly, low effort controls.
- Single, multiple and joystick controllers
- Ergonomic designs
- Range of accurate, low hysteresis control curves
- Dedicated pilot valves, with magnetic detents, to control 2 or 3 spool directional valve for wheeled loader applications
- Range of valves with foot pedal operation



## HANDLES

- Ergonomic multi function handles for both safe and accurate man/machine interface.
- Knobs and levers with or without electrical switches and range of buttons
- Ergonomic designs
- Multifunction handles with extended button area
- Dedicated safety switch functions; with button or capacitive sensors safeTgrip™



## ELECTRICAL JOYSTICKS

- For use in electronic control systems.
- Pedals and joysticks
- With or without programmable functions
- On Off / Proportional
- Analogue 0:5V
- PWM
- CAN-bus



## ELECTRAULICS

- CAN-bus control systems
- Digital and Analogue inputs and outputs
- Inbuilt safety functions
- Master / Slave system ability
- Easy to use programming software
- GPS and other remote communication enabled







# CONSTRUCTION

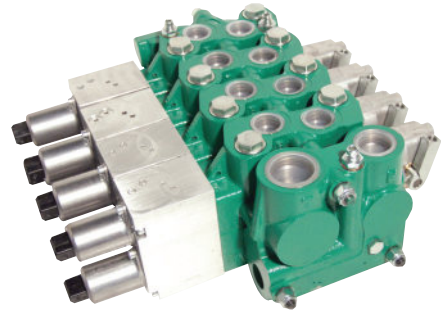
Performance - Speed - Accuracy - Capacity - Long Life Reliability - Robustness - Ease of Use are all well known features for Hydreco Hydraulics pumps, main control valves, remote control valves, joysticks and handles.



## DIRECTIONAL CONTROL VALVES



- Directional Control Valves for mobile, materials handling and other applications.
- 30 to 450 l/min (7.9 to 119 gal/min) and up to 250 bar (3500 psi) system pressure
- Parallel, tandem and mixed circuits available depending on model
- Monoblock and sectional high grade iron housings
- Wide range of spool types and metering characteristics
- Operating systems include manual, hydraulic, electro-hydraulic and pneumatic
- Integral system relief valve together with individual port relief and make up options available



## WORLD PUMPS



- Single and multiple pump options covering all applications from 12 to 88 cc/rev (0.79 to 5.37 cu in/rev) per pump section. Low noise spur gear technology minimizes pressure ripple and noise.
- Up to 350 bar (5076 psi) nominal pressure
- 450 To 3500 RPM
- High volumetric efficiency
- Very low noise levels
- Cast iron construction
- Long life plain bearings
- Multiple pumps on one shaft
- Popular drives and ports



## COMPACT POWER-PACKS



- DC motors for either 12 or 24 VDC, multi-functional manifold, valves, tank, remote control, etc.
- Power units feature both typical power up power down (dual action) and a power up gravity down circuits (single action).
- Relief valves provides extra protection for the equipment.
- Lowering speed is automatically adjusted by a pressure compensated flow control valve.
- Widely used in tipper trailers, hydraulic hoists and so on.





# OFFSHORE

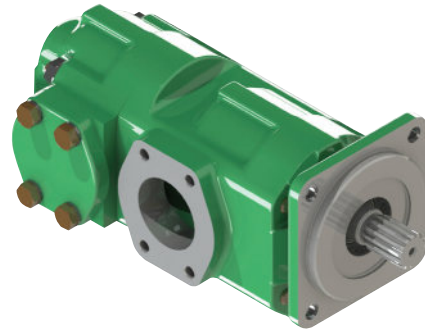
Hydreco Hydraulics application engineers can offer complete solutions for many marine and off-shore hydraulic installations and control systems.



## Q SERIES PUMPS



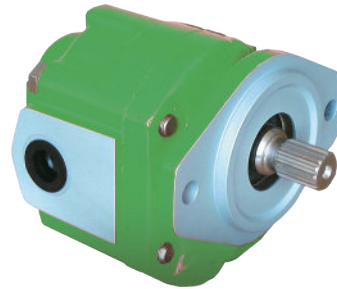
- Single and multiple pump options covering all applications from 16 to 240 cc/rev (0.98 to 14.65 cu in/rev) per pump section.
- Patented helical or low noise spur gear technology minimizes pressure ripple and noise.
- 280 bar (4000 psi) peak pressure
- 450 to 3000 RPM
- High volumetric efficiency
- Very low noise levels
- Cast iron construction
- Long life plain bearings
- Multiple pumps on one shaft
- Popular drives and ports



## X5 SERIES GEAR PUMPS



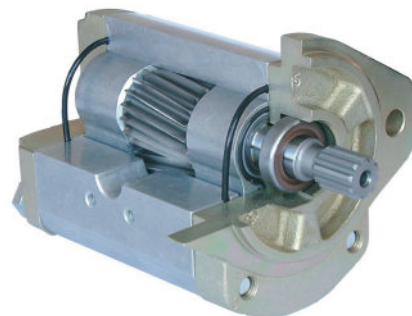
- Single and multiple pump options for higher volume applications from 23 to 68 cc/rev (1.40 to 4.15 cu in/rev) per pump section. Single through to quadruple pump assemblies. Helical gear technology minimises noise.
- 280 bar (4000 psi) peak pressure
- 450 to 3000 RPM
- High volumetric efficiency
- Very low noise levels
- Cast iron construction
- Long life plain bearings
- Multiple pumps on one shaft
- Popular drives and ports



## ALUMINIUM HELICAL & SPUR GEAR PUMPS



- Single and multiple pump options from 1.2 to 116 cc/rev (0.07 to 7.08 cu in/rev) per pump section. Spur gear versions across the whole range with helical gear versions from 6 to 28.1 cc/rev (0.37 to 1.72 cu in/rev).
- Hydraulic motors also available.
- 250 bar (3500 psi) peak pressure
- Up to 4000 RPM
- High efficiency
- Integral relief valves
- Multiple pumps on one shaft
- Popular drives and ports







# AGRICULTURE

Performance - Speed - Accuracy - Capacity - Long Life Reliability - Robustness - Ease of Use are all well known features for Hydreco Hydraulics pumps, main control valves, remote control valves, joysticks and handles.

## HYDRAULIC PUMPS

- Highly efficient PUA Pumps with side and rear ports, SAE, UNI and O8 Mount options.
- Hydreco Powauto dump pumps utilise premium components for long life and durability.
- Single and Bi Rotational options.



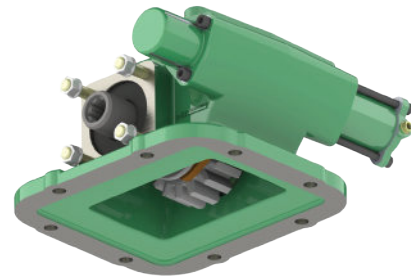
## TIPPING VALVES

- Best in class single and two spool monoblock valves with low pressure drop access ports.
- Sectional Valves
- Diverter Valves
- Tank Valves



## POWER TAKE OFF

- With a comprehensive range of PTOs for most vehicle transmissions, the Powauto solution will be your partner for any application.
- PTO's with constant and hot shift options catering for all applications across extensive range of US, European and Japanese vehicles.



## TELESCOPIC CYLINDERS

- Robust front end and under body telescopic cylinders for tipper/dump truck and trailer applications.
- 3, 4 and 5 stage units
- Outer cover versions available
- Spherical bearing joints available
- Load capacity 15-40 tonnes



## AUXILIARIES

- Control Kits
- Hydraulic Tanks
- 5th Wheels
- Quick Release Couplings
- On-line Product Configurator



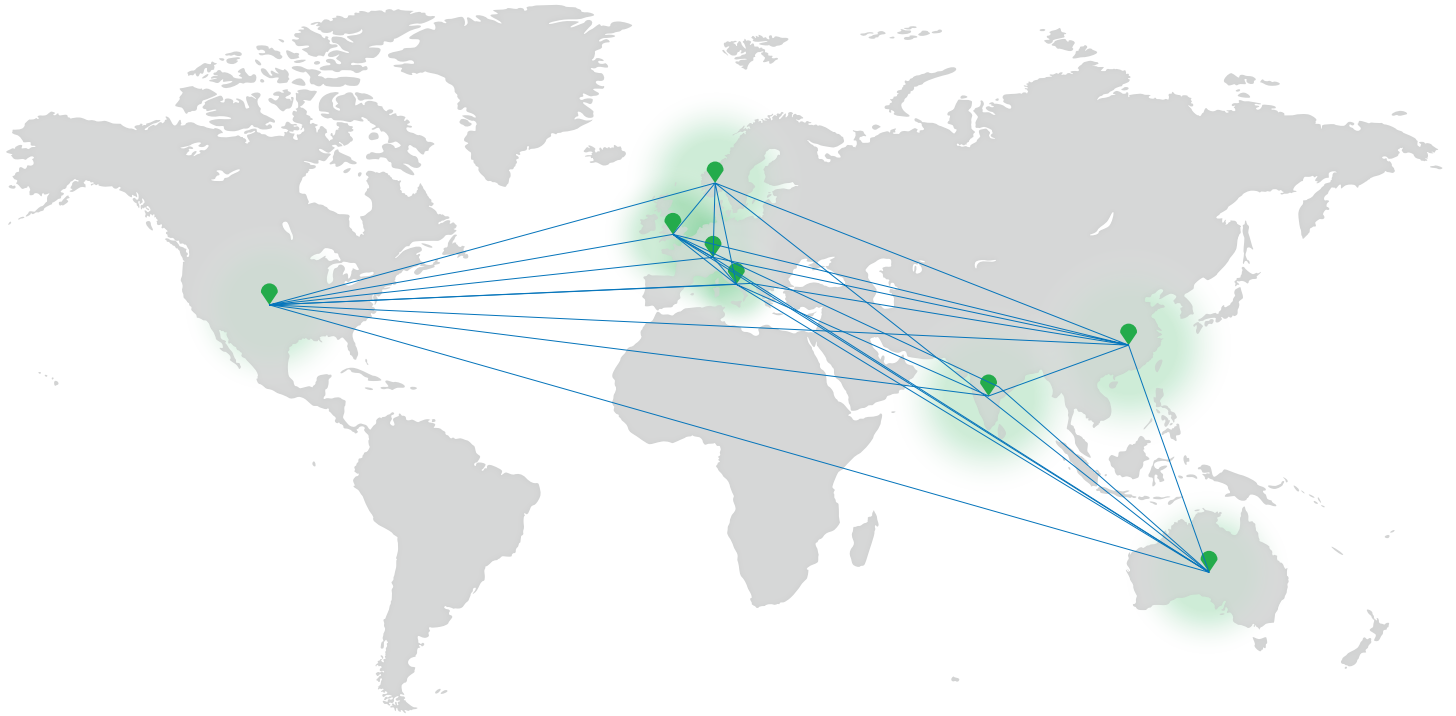




# TRANSPORT

Powauto is a leading brand of Hydreco Hydraulics, a global provider of products, systems & services to the Transport & Mobile Hydraulics industries.

## SUPPORTED BY A WORLDWIDE SUPPLY CHAIN



## CONTACT INFORMATION

### EMEA

<b>GERMANY</b>	Hydreco Hydraulics GmbH, Straelen (NRW)	Tel: +49 2834 94303-41	Fax: +49 2834 94303-64	info-de@hydreco.com
<b>ITALY</b>	Hydreco Hydraulics Italia Srl, Vignola (MO)	Tel: +39 059-7700411	Fax: +39 059-7700425	sales-it@hydreco.com
<b>NORWAY</b>	Hydreco Hydraulics Norway AS, Nittedal	Tel: +47 22 90 94 10		post-no@hydreco.com
<b>UK</b>	Hydreco Hydraulics Ltd, Poole, Dorset	Tel: +44 (0) 1202 627500	Fax: +44 (0) 1202 627555	info-uk@hydreco.com

### AMERICAS

<b>USA</b>	Hydreco Inc, Rock Hill (SC)	Tel: +1 704 295-7575	Fax: +1 864 210-9845	sales-us@hydreco.com
<b>LATIN AMERICA</b>		Tel: +1 704 572-6266		sales-es@hydreco.com

### APAC

<b>AUSTRALIA</b>	Hydreco Hydraulics Pty Ltd, Seven Hills (NSW)	Tel: +61 2 9838 6800	Fax: +61 2 9838 6899	sales-au@hydreco.com
<b>AUSTRALIA</b>	Hydreco Hydraulics Pty Ltd, Smeaton Grange (NSW)	Tel: +61 2 4647 6577		au-smeatongrange@hydreco.com
<b>AUSTRALIA</b>	Hydreco Hydraulics (WA) Pty Ltd, Welshpool (WA)	Tel: +61 8 9377 2211	Fax: +61 8 9377 2223	au-hhw@hydreco.com
<b>INDIA</b>	Hydreco Hydraulics India Private Ltd, Bangalore	Tel: +91 80 67656300	Fax: +91 80 67656311	sales-in@hydreco.com